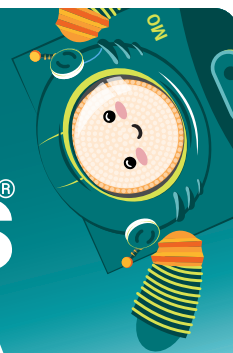




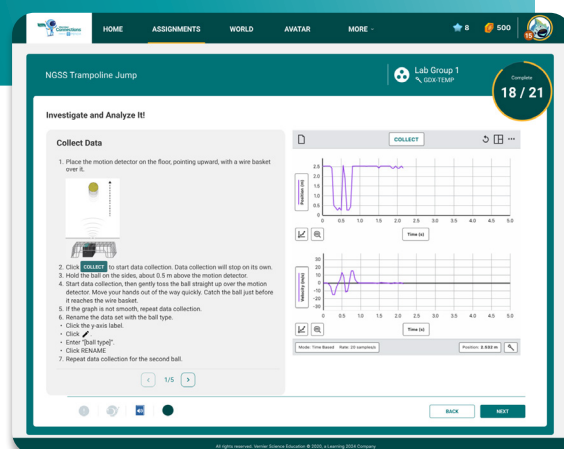
Vernier Connections[®]

POWERED BY  PENDA



Engage students grades 3–12 in STEM sensemaking

Vernier Science Education and **Penda Learning** have partnered to bring science teachers and their students the best of digital learning and hands-on science. At the heart of Connections is the belief that great STEM education happens when scaffolded instruction, hands-on investigation, and purposeful assessment come together to support students' learning.



Ensure excellent, standards-aligned STEM instruction in every classroom.

Connections delivers phenomenon-based learning aligned to **NGSS**, **TEKS**, **Florida SASS**, and **Pennsylvania STEELS** through engaging activities, assessments, and investigations that support high-quality science instruction. At the high school level, investigations emphasize hands-on data collection and analysis using Vernier wireless Go Direct[®] sensors.

NGSS

TEKS

FL

PA

Want to learn more?

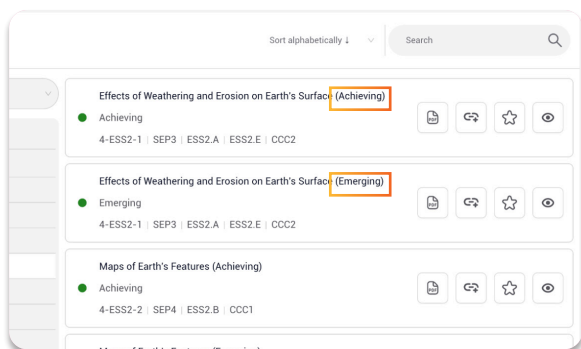
LET'S CHAT!

k12outreach@vernier.com



LEARN MORE



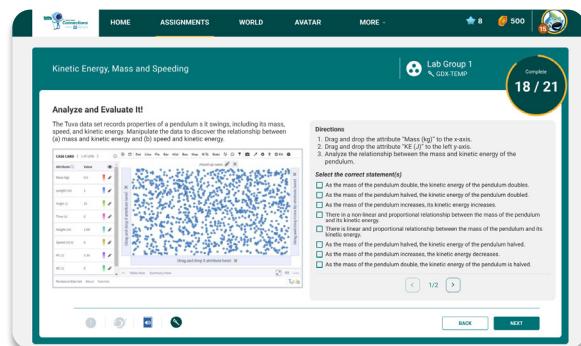


Deliver inclusive learning to support students of all abilities.

Instruction is chunked and scaffolded, and **activities are differentiated by reading level**. With translation available in over 100 languages, read-aloud functionalities, and integration with Microsoft Immersive Reader, Connections makes STEM learning more accessible for all learners.

Give teachers back time to focus on other high-impact activities.

Connections saves teachers time by providing ready-to-use lessons and assessments aligned with district curriculum, a simulation library, autograding, quick insight into students' mastery, and more so they can spend less time planning and more time supporting students' learning.



Class Mastery Report

Report data for: 2024-09-18 to 2025-09-30

| Name | Particle Collisions Part 2 (Physical Science Assessment) | | | Particle Collisions Part 1 (Physical Science Assessment) | | | Nuclear Physics |
|----------------------------------------|----------------------------------------------------------|------------|------------|----------------------------------------------------------|------------|------------|-----------------|
| | First Score | Last Score | Best Score | First Score | Last Score | Best Score | |
| Grade 10 Chemistry - Period 3 - 3 (20) | | | | | | | |
| Vallieres, Michel | 50% | 58% | 58% | 78% | 100% | 100% | 100% |
| Melara, Kevin | 100% | 100% | 100% | 88% | 88% | 88% | 75% |
| Jagericiccano, Andrea | 100% | 100% | 100% | 87% | 88% | 88% | 88% |
| Jettis, David | 83% | 83% | 83% | 100% | 100% | 100% | 88% |
| Montenegro, Daniel | 100% | 100% | 100% | 78% | 78% | 78% | 88% |
| Alonso, Juliana | 87% | 100% | 100% | 88% | 88% | 88% | 88% |
| Alonso, Daniel | 83% | 83% | 83% | 100% | 100% | 100% | 45% |
| Ortiz-Vega, Lebron | 87% | 82% | 82% | 78% | 78% | 78% | 88% |
| Vallieres, Emma | 100% | 100% | 100% | 88% | 88% | 88% | 50% |
| Lee, Logan | 100% | 100% | 100% | 100% | 100% | 100% | 88% |
| Hernandez, Bryan | 50% | 83% | 83% | 88% | 88% | 88% | 100% |
| Yoon, Chabika | 83% | 82% | 82% | 58% | 58% | 58% | 88% |
| Yoon, Nicholas | 83% | 82% | 82% | 44% | 44% | 44% | 75% |

Gain critical insight into students' learning and adjust instruction as needed.

Connections offers a full suite of assessments and customizable reports that provide insight into student progress and mastery. Teachers and administrators can monitor individual, class, school, and district progress—and make data-driven decisions to target instruction.

Systems Integration

Single Sign-On and
Auto Data Rostering

Clever

ClassLink

Infinite Campus

IMS GLOBAL
Learning Consortium
OneRoster standard

Google SSO

Learning Management
Systems

CANVAS
BY INSTRUCTURE

schoology

Seamless Integration into Your Curriculum

Our expert team will align Connections activities, assessments, and investigations to your district's scope, sequence, and pacing, seamlessly integrating Connections into your teachers' curriculum.