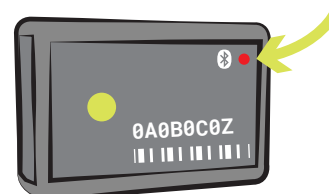


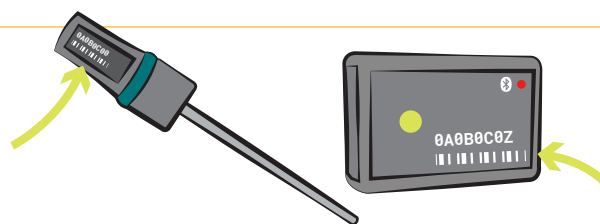
How to Connect Your Vernier Go Direct® Sensor Using Bluetooth® Wireless Technology

 For iPad® and iPhone®

1. Turn on the Sensor 



2. Find Your Sensor ID Number



3. Launch Graphical Analysis
Click or Tap Sensor Data Collection.



Sensor Data Collection
Collect data from Vernier sensors

4. Find and Connect to Your Sensor ID
Start typing the ID number to find it or use Proximity Connect to pair with the nearest sensor. Click or tap Connect.

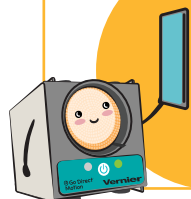
 PROXIMITY CONNECT

Filter Device List
e.g., 007 or TMP

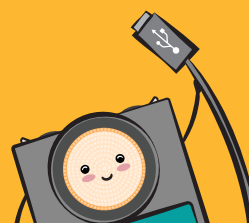
 GDX-GP 0A0B0C0Z

Connect

5. You're Connected!
If prompted, choose a sensor channel.
Otherwise, you're ready to start your experiment!



Discover more ways
to connect at
vernier.com/til/6000



You can also
connect via USB.