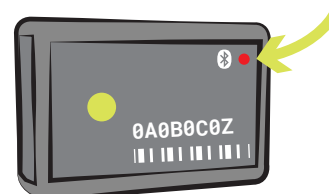


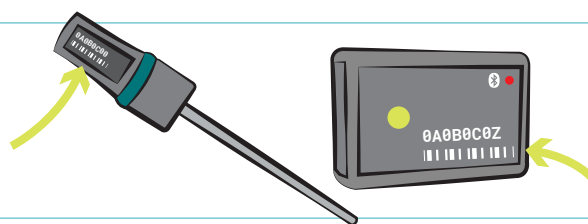
# How to Connect Your Vernier Go Direct® Sensor Using Bluetooth® Wireless Technology




## 1. Turn on the Sensor



## 2. Find Your Sensor ID Number



## 3. Launch Graphical Analysis

Go to  [graphicalanalysis.app](http://graphicalanalysis.app)

Click Sensor Data Collection, then click Wireless.



### Sensor Data Collection

Collect data from Vernier sensors

### Sensors

WIRELESS

USB

## 4. Find and Connect to Your Sensor ID

Start typing the ID number to find it or use Proximity Connect to pair with the nearest sensor. Click Connect.



PROXIMITY CONNECT

Filter Device List

e.g., 007 or TMP

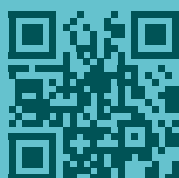
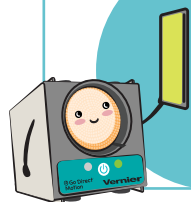
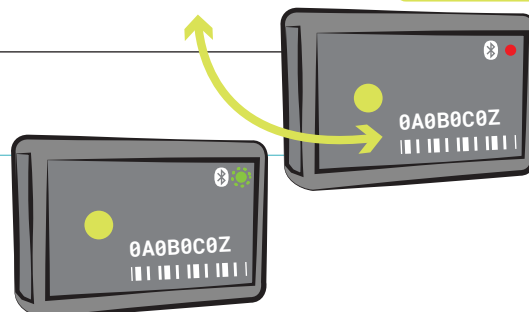


GDX-GP 0A0B0C0Z

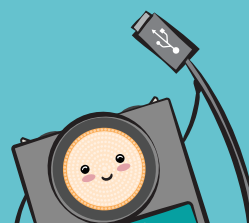
Connect

## 5. You're Connected!

If prompted, choose a sensor channel.  
Otherwise, you're ready to start your experiment!



Discover more ways  
to connect at  
[vernier.com/til/6000](http://vernier.com/til/6000)



You can also  
connect via USB.